



# Remedial Investigation – Ricochet Area Munitions Response Site in SGL 211, PA

## Field Program Weekly Project Update – 04/17/10 thru 04/23/10



### Progress This Week:

- Visual Survey with Analog Instruments: 1,121,142 of 1,121,142 linear ft of transects
- Digital Geophysical Mapping (DGM)Transects: 47,520 of 136,295 linear ft of transects. **Note: Remaining 88,775 linear feet proposed for DGM Transects will be applied under Analog Instrument Transects.**
- Analog Instrument Transects: 11,616 linear ft of 88,775 linear ft of transects
- Digital Geophysical Mapping Grids (DGM): 0 of 50 Grids
- Anomaly Reacquisition and Digs:
  - 0 digs for DGM Transects
  - 0 digs of 50 Grids
- Munitions Constituents Sampling: 5 samples collected

### Noteworthy Events This Week:

- Visual Surveys with Analog Instruments completed.
- Started survey placement of DGM Grid corners.
- Started Analog Instrument Transects.

### Anticipated Accomplishments Next Week:

- Start DGM Grid collection.
- Start DGM Grid Anomaly Reacquisition and Digs.
- Continue Analog Instrument Transects.

### Project Milestones:

(✓ Accomplished ∅ Missed)

- ✓ Complete Mobilization.....(04/02/2010)
- ✓ Complete Survey Control.....(04/02/2010)
- ✓ Complete Visual Survey with Analog Instruments.....(04/22/2010)
- ✓ Complete DGM Transects.....(03/24/2010)
- Analog Instrument Transects.....(05/07/2010)
- Complete DGM Grids.....(05/07/2010)
- Complete Anomaly Reacquisition & Digs.....(05/14/2010)
- Munitions Constituent Sampling.....(05/14/2010)

### Safety – Everyone’s No. 1 Priority!

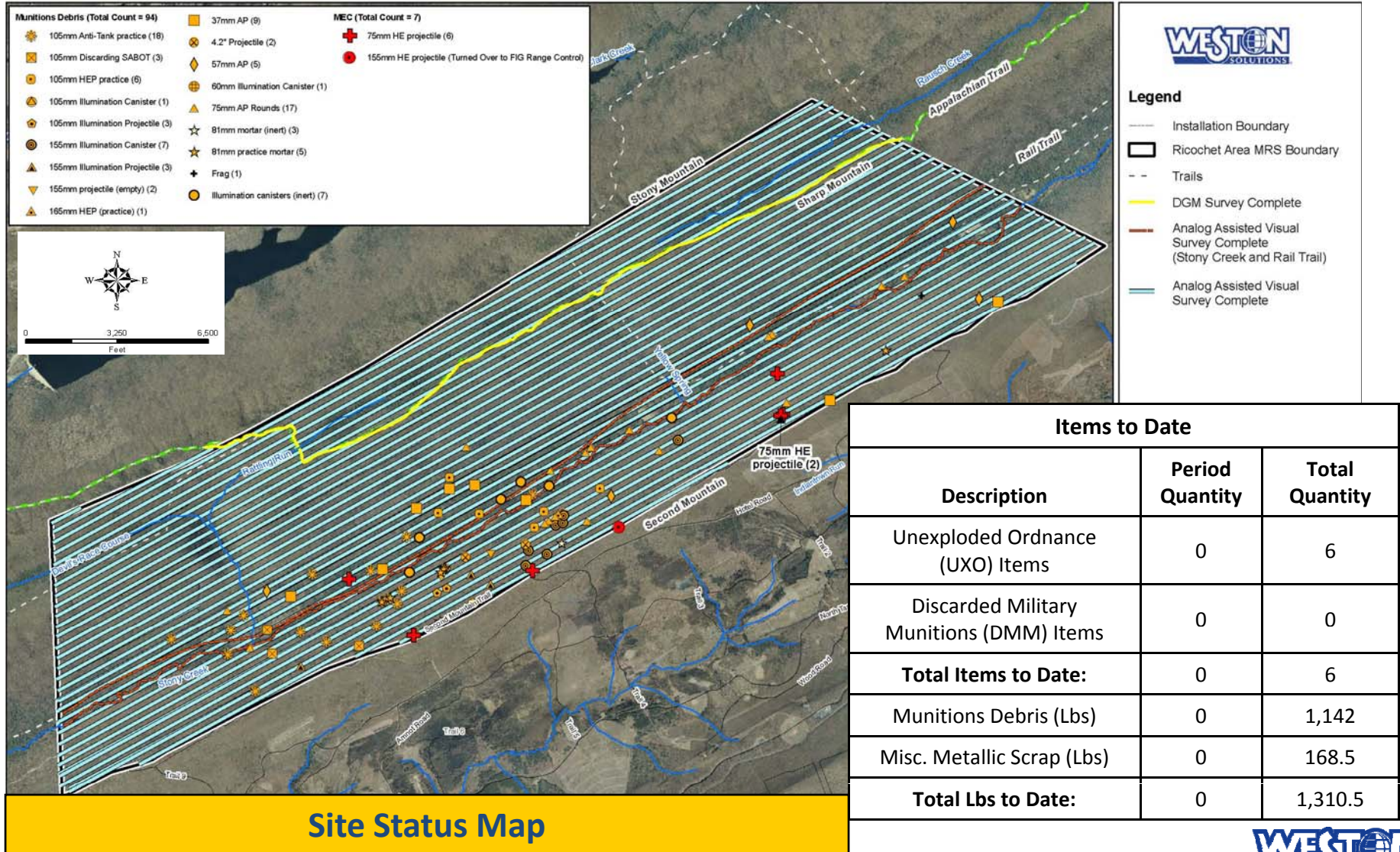
- 3,432 Hours worked without a lost time incident.
- Employee Safety Participation Program in force.





# Remedial Investigation – Ricochet Area Munitions Response Site in SGL 211, PA

## Field Program Weekly Project Update – 04/17/10 thru 04/23/10





# Remedial Investigation – Ricochet Area Munitions Response Site in SGL 211, PA

## Field Program Weekly Project Update – 04/17/10 thru 04/23/10



1



3



2



1. Field Technician navigating along an Analog-Assisted Visual Survey in SGL 211.
2. Geophysical Technicians collecting pre-project DGM Quality Control Data in SGL 211.
3. Devils Racecourse during data collection.